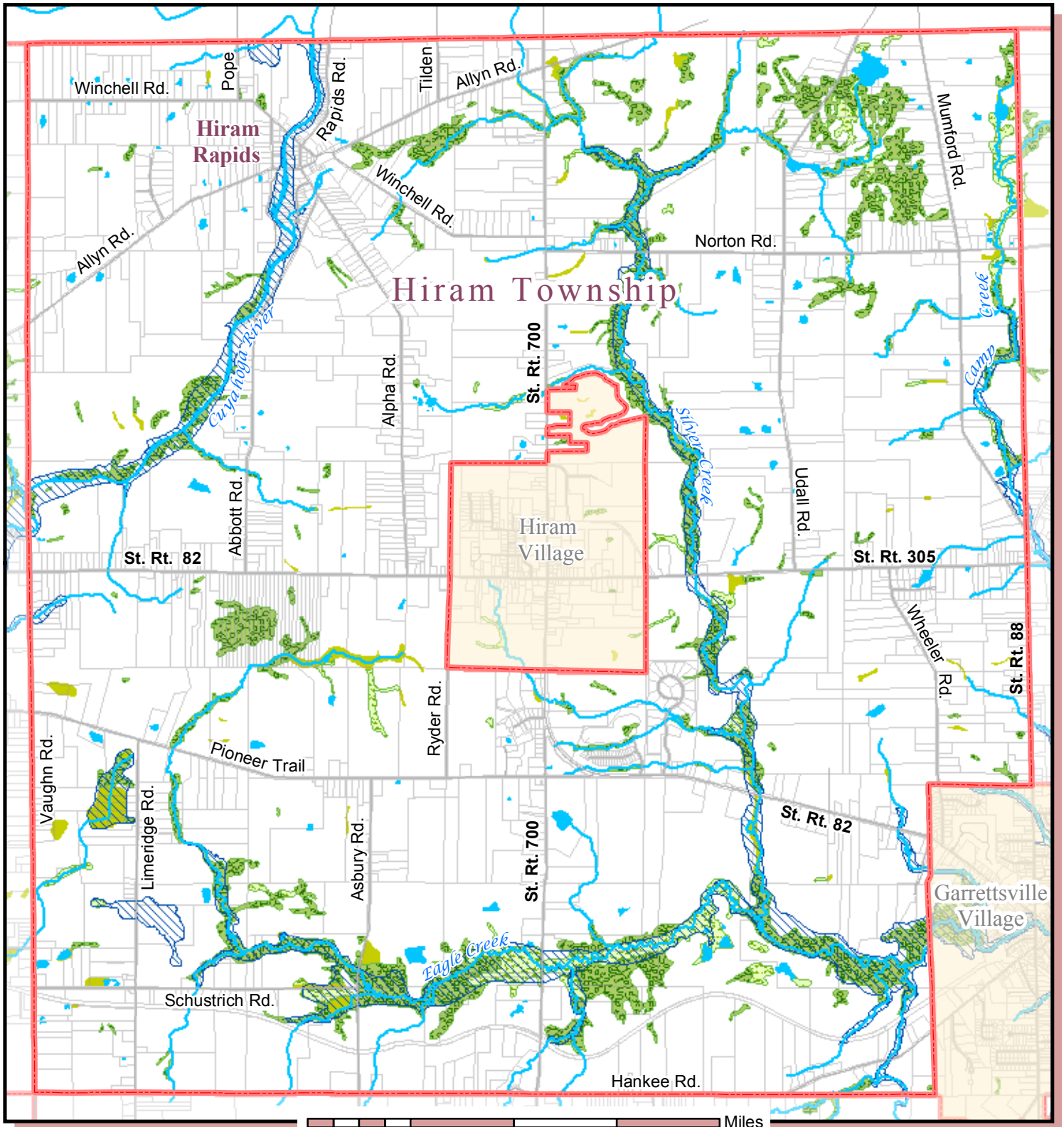








Wetlands & Flood Hazard Areas



November 2012



Wetland Type

-  Palustrine Emergent Marsh
-  Palustrine Scrib/Shrub
-  Palustrine Forested
-  Flood Hazard Area

Source: Roads, parcels, Portage County GIS Dept. , Jan 2012;
 Wetlands, Portage Co. Wetlands Inventory, from 2000 aerial and orthophotos, 2004; Flood hazard areas, FEMA FIRM update, 2008

